

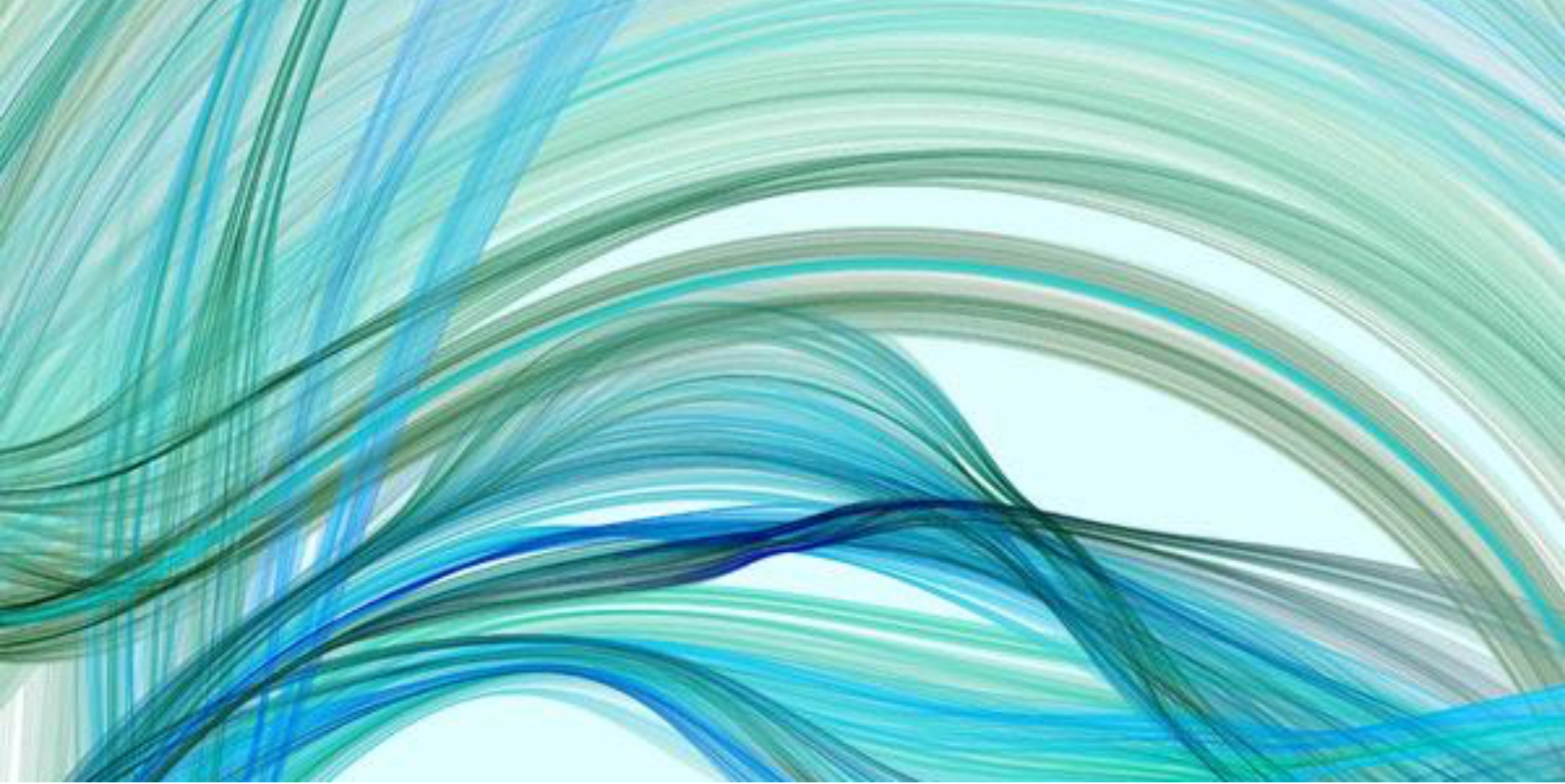
GETTING PERSONAL:

**CONNECTING A PERSON
TO A PASSAGE**

Darby Strickland, M.
Div.
CCEF Living Scripture
Conference 2018

OUR HEARTS CAN HINDER THE PROCESS

- 1) Internal Pressure
- 2) External Pressure
- 3) Pain of People's Pain
- 4) Failing to Know the Person
- 5) Limited Passages



WHY DO I MAKE THESE ERRORS?

Why do you make these errors?

PAUL SHOWS ME A BETTER WAY

Jesus' death and resurrection triggered a fundamental change in our relationship with God.

A relationship in which faith, rather than behavior, becomes central.

So that Christ may dwell in
your hearts through faith
that you, being rooted and grounded in love,
may have strength to comprehend with all
the saints what is the breadth and length and
height and depth, and to know the love of
Christ that surpasses knowledge, that you
may be filled to the measure of all the
fullness of God.

Paul's prayer in
Ephesians 3

We need to use the bible in ways that people get caught up in the person of Jesus.

Connect the details of their lives, bit by bit, to him.



**“BIBLICAL
COUNSELING IS
KNOWING SOMEONE
AND KNOWING
SCRIPTURE AND
BRINGING THEM
TOGETHER.”
WELCH**

Practical ways to use Scripture

RESOURCES

- [How Sanctification Works](#) by David Powlison
- [The Dynamic Heart in Daily Life: Connecting Christ to Human Experience](#) by J. Pierre
- [CrossTalk: Where Life & Scripture Meet](#) by Michael R. Emlet
- [Caring for One Another: 8 Ways to Cultivate Meaningful Relationships](#) by Ed Welch
- [Love Walked among Us: Learning to Love Like Jesus](#) by Paul Miller
- [Befriend: Create Belonging in an Age of Judgment, Isolation, and Fear](#) by Scott Sauls

- Powlison, David. (1999, fall). [X-ray questions: Drawing out the whys and wherefores of human behavior.](#) The Journal of Biblical Counseling, 18(1), pp. 2-9.
- Hindson, Edward. (1978) [The Use of Scripture in Nouthetic Counseling.](#) The Journal of Biblical Counseling, p. 28-39
- Monroe, Phil. [Guidelines for Effective Use of Scripture in Counseling.](#) PDF